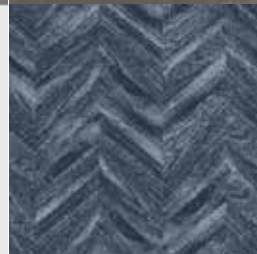
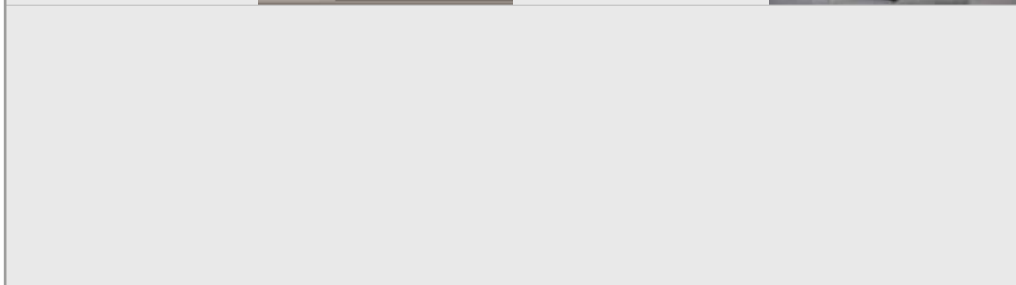
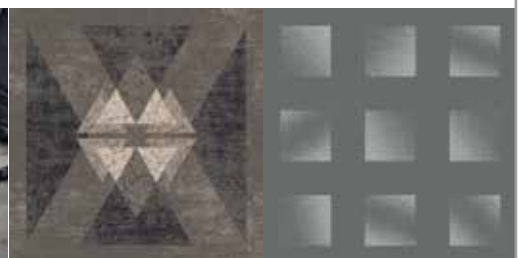
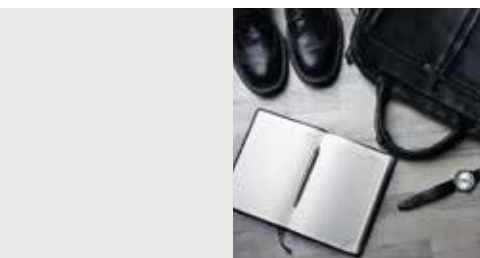
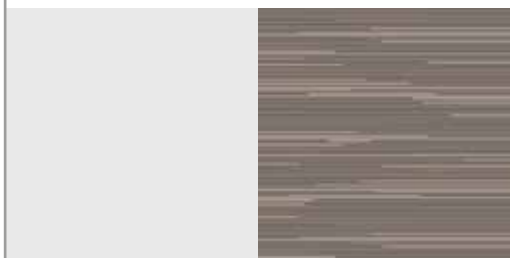
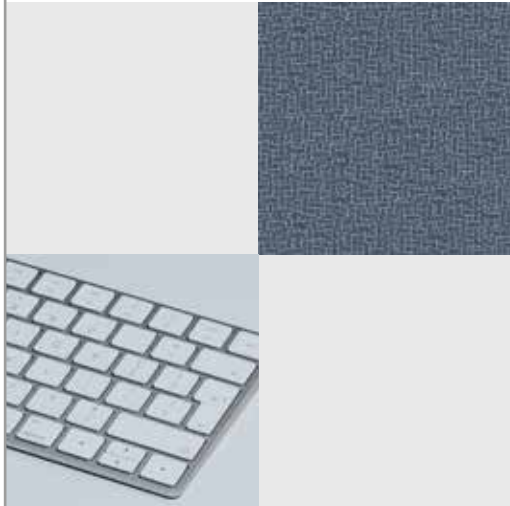


# quick start

TILES



# quick start

## TILES

**de** Quick Start Tiles bietet 36 zeitlose Designs in je 5 ruhigen Farbvarianten für das Büro. Erhältlich in den Größen 60 × 60 cm, 120 × 120 cm und 180 × 180 cm.

**en** Quick start TILES offers 36 timeless designs in 5 subtle shades for the office. Available in sizes 60 × 60 cm, 120 × 120 cm and 180 × 180 cm.

**fr** Quick start TILES propose 36 modèles intemporels dans 5 coloris doux pour le bureau. Disponible dans les tailles 60 × 60 cm, 120 × 120 cm et 180 × 180 cm.



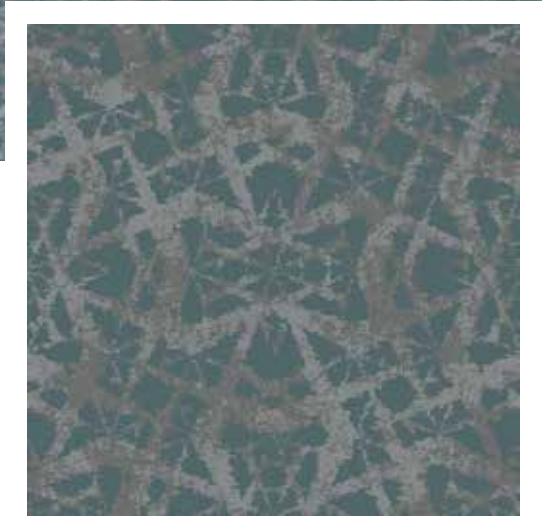
- 770 g/m<sup>2</sup> Markenpolyamid für höchsten Anspruch
- Produziert mit modernster Chromojet-Technologie
- 36 Designs aller Art
- 5 Farboptionen pro Design
- Unkomplizierte Auswahl
- Einfach zu bestellen
- Schneller Musterservice
- Kurze Lieferzeiten
- Wettbewerbsfähige Preise

- 770 g/m<sup>2</sup> branded polyamide to meet the highest standards
- Manufactured with the latest Chromojet technology
- 36 designs of all sorts
- 5 colour choices per design
- Uncomplicated selection
- Easy to order
- Quick sample service
- Short delivery times
- Competitive prices

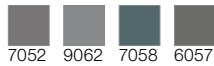
- Polyamide de marque 770 g / m<sup>2</sup> répondant au plus haut niveau d'exigence
- Fabriqué avec la dernière technologie Chromojet
- 36 modèles de toutes sortes
- 5 choix de coloris différents par modèle
- Une sélection simple
- Facile à commander
- Un envoi d'échantillon rapide
- Des délais de livraison courts
- Des prix compétitifs



F63-03A



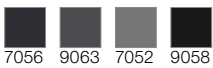
**F41-05A**



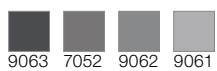
60er Fliesen, rapportgenau  
60 x 60 tiles, critical cut  
Dalles 60 x 60 cm, avec raccord



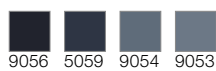
**F41-01A**



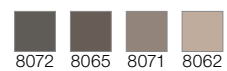
**F41-02A**

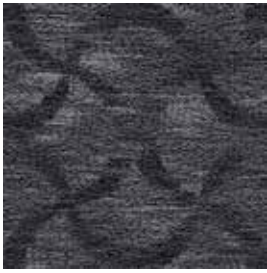


**F41-03A**



**F41-04A**





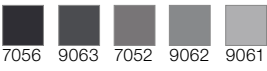
**F42-01A**



7056 9063 7052 9062 9058



**F42-02A**



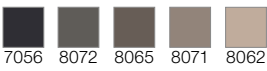
7056 9063 7052 9062 9061



9050



**F42-04A**



7056 8072 8065 8071 8062



8060



**F42-05A**

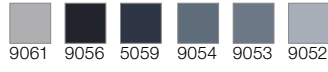


7056 9062 9058 7058 6057



6050

**F42-03A**

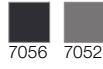


9061 9056 5059 9054 9053 9052

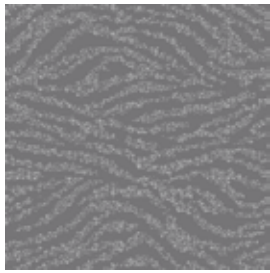
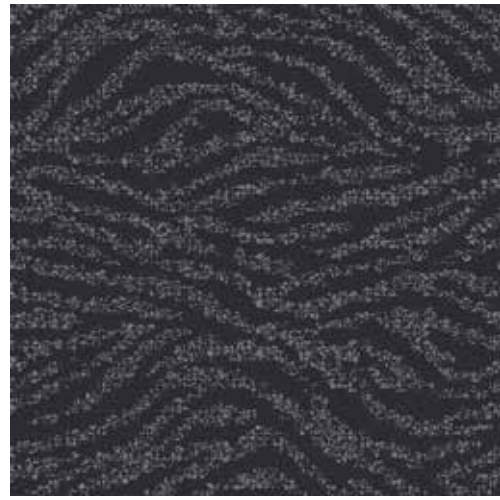
60er Fliesen, rapportgenau  
60 x 60 tiles, critical cut  
Dalles 60 x 60 cm, avec raccord



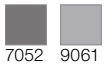
**F43-01A**



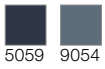
60er Fliesen, rapportgenau  
60 x 60 tiles, critical cut  
Dalles 60 x 60 cm, avec raccord



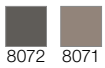
**F43-02A**



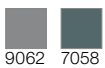
**F43-03A**



**F43-04A**

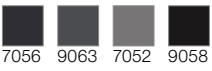


**F43-05A**

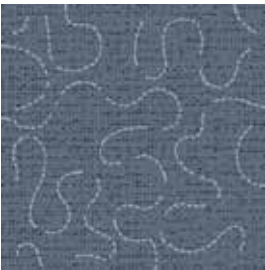
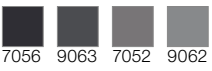




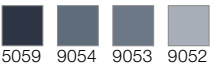
**F44-01A**



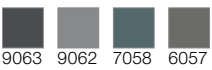
**F44-02A**



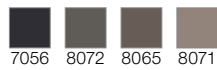
**F44-03A**



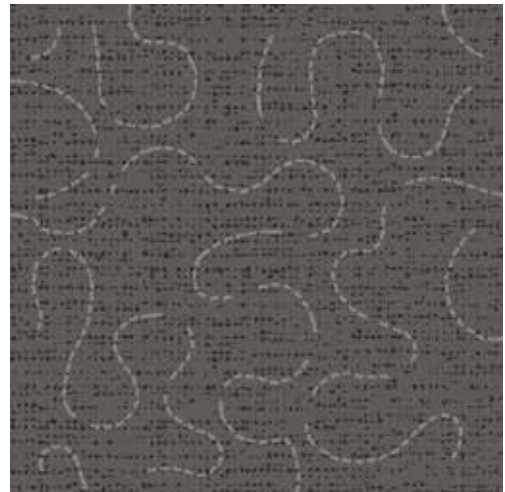
**F44-05A**



**F44-04A**



60er Fliesen, rapportgenau  
60 x 60 tiles, critical cut  
Dalles 60 x 60 cm, avec raccord





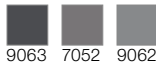
**F45-01A**



7056 9063 9058



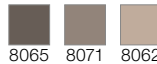
**F45-02A**



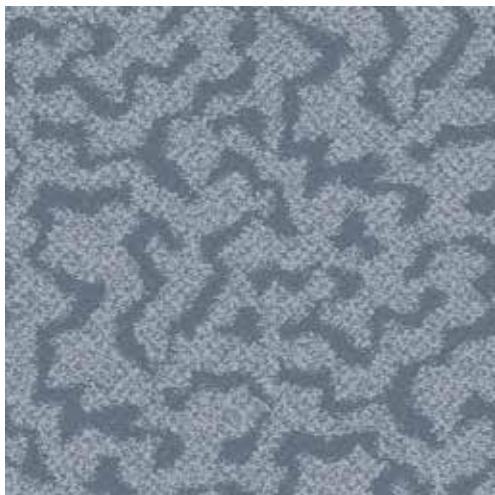
9063 7052 9062



**F45-04A**



8065 8071 8062



**F45-03A**



9054 9053 9052

60er Fliesen, rapportgenau  
60 x 60 tiles, critical cut  
Dalles 60 x 60 cm, avec raccord



**F45-05A**



9062 7058 6057







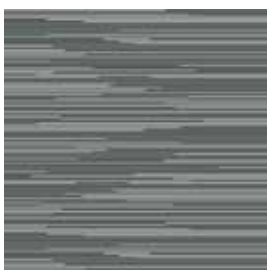
**F46-01A**



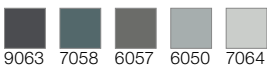
**F46-02A**



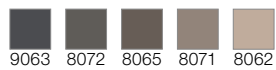
**F46-03A**



**F46-05A**



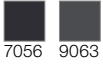
**F46-04A**



60er Fliesen, rapportgenau  
60 x 60 tiles, critical cut  
Dalles 60 x 60 cm, avec raccord



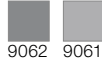
**F47-01A**



7056 9063



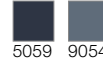
**F47-02A**



9062 9061



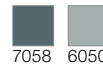
**F47-03A**



5059 9054



**F47-05A**

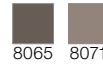


7058 6050

60er Fliesen, rapportgenau  
60 x 60 tiles, critical cut  
Dalles 60 x 60 cm, avec raccord

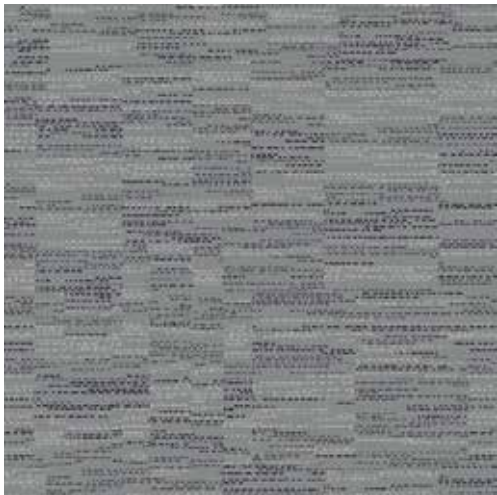


**F47-04A**

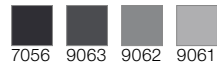


8065 8071





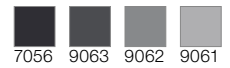
**F48-02A**



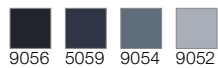
60er Fliesen, rapportgenau  
 60 x 60 tiles, critical cut  
 Dalles 60 x 60 cm, avec raccord



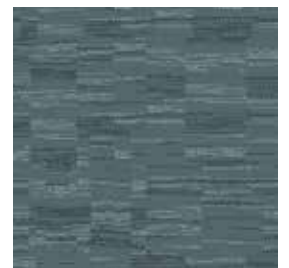
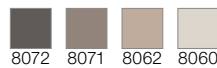
**F48-01A**



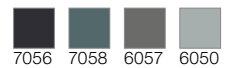
**F48-03A**



**F48-04A**

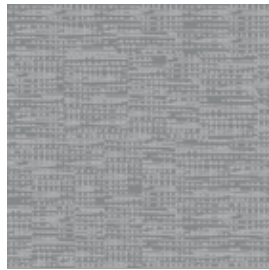
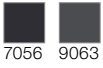


**F48-05A**

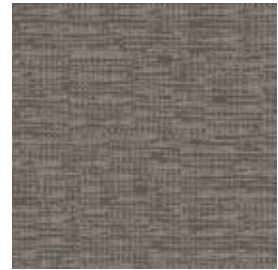
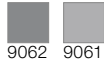




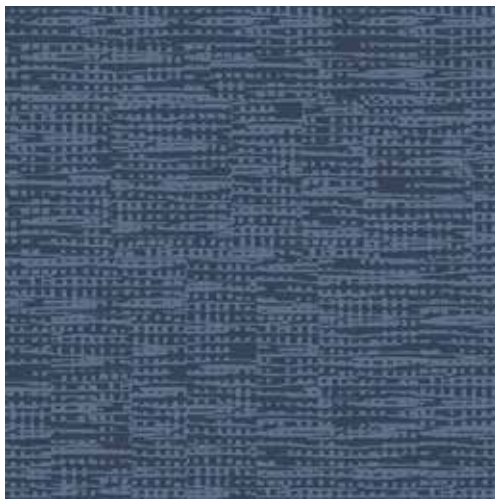
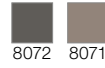
**F49-01A**



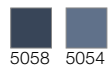
**F49-02A**



**F49-04A**



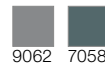
**F49-03A**

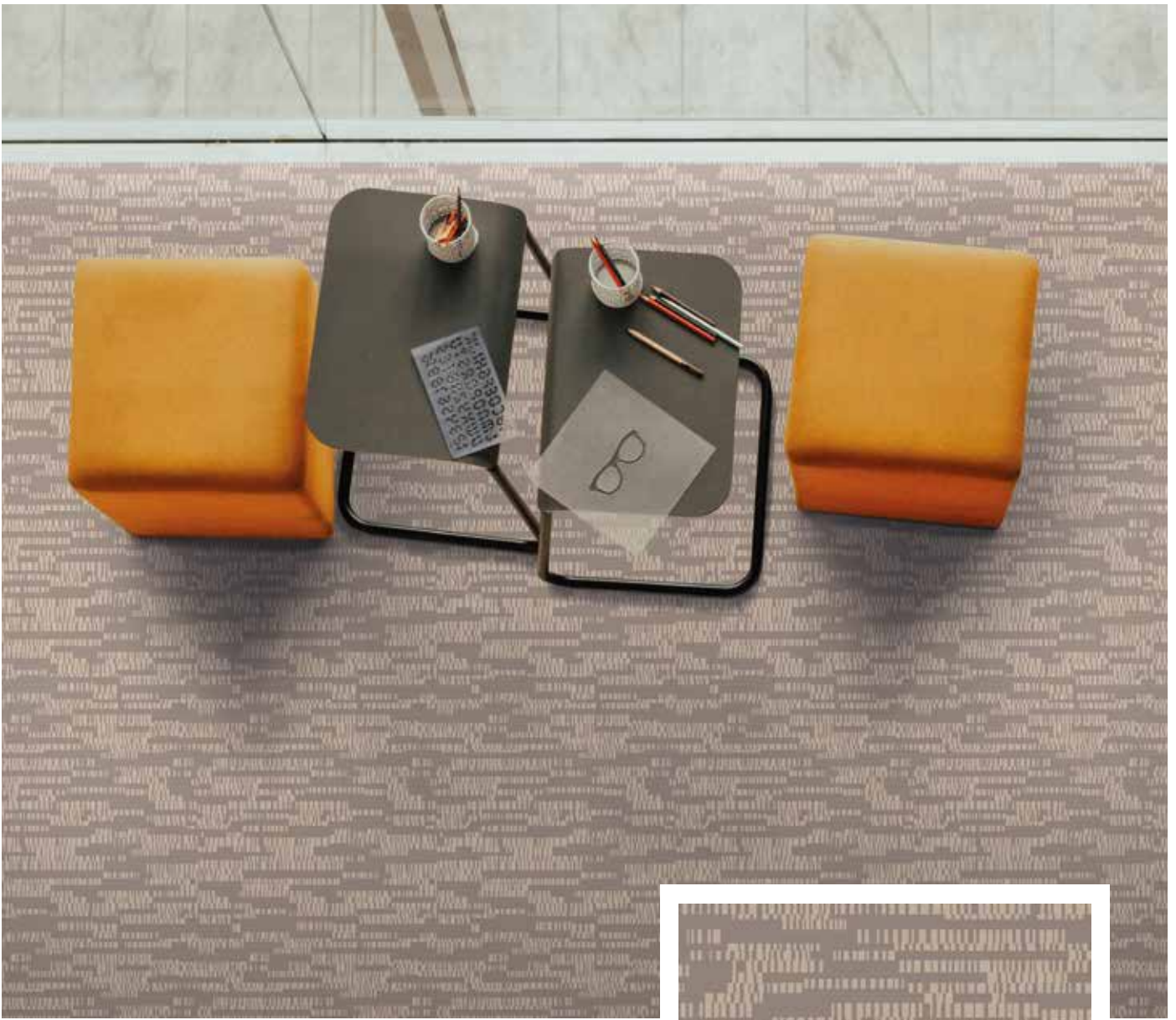


60er Fliesen, rapportgenau  
60 x 60 tiles, critical cut  
Dalles 60 x 60 cm, avec raccord

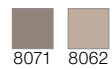


**F49-05A**

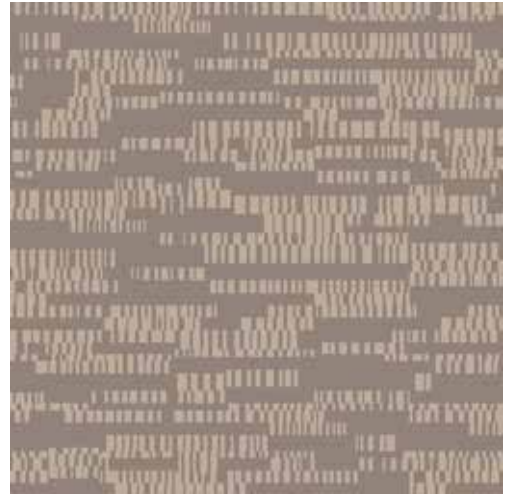




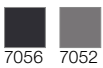
**F50-04A**



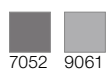
60er Fliesen, rapportgenau  
60 x 60 tiles, critical cut  
Dalles 60 x 60 cm, avec raccord



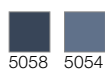
**F50-01A**



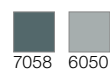
**F50-02A**



**F50-03A**

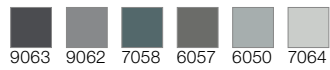


**F50-05A**





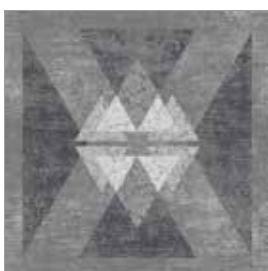
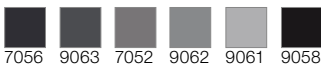
**F51-05A**



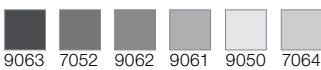
60er Fliesen, rapportgenau  
60 x 60 tiles, critical cut  
Dalles 60 x 60 cm, avec raccord



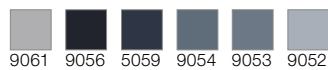
**F51-01A**



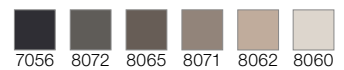
**F51-02A**



**F51-03A**

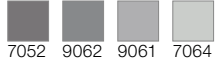


**F51-04A**





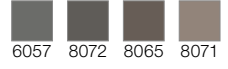
**F52-02A**



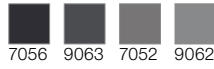
**F52-03A**



**F52-04A**



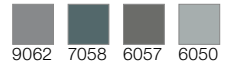
**F52-01A**



60er Fliesen, rapportgenau  
60 × 60 tiles, critical cut  
Dalles 60 × 60 cm, avec raccord

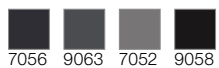


**F52-05A**





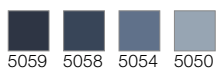
**F53-01A**



7056 9063 7052 9058



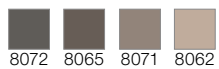
**F53-03A**



5059 5058 5054 5050



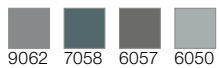
**F53-04A**



8072 8065 8071 8062



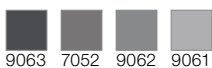
**F53-05A**



9062 7058 6057 6050



**F53-02A**



9063 7052 9062 9061

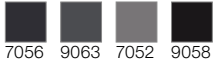
60er Fliesen, rapportgenau  
60 x 60 tiles, critical cut  
Dalles 60 x 60 cm, avec raccord



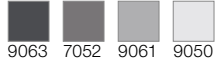




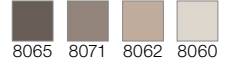
**F54-01A**



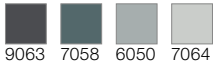
**F54-02A**



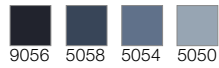
**F54-04A**



**F54-05A**



**F54-03A**

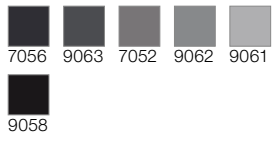


60er Fliesen, rapportgenau  
60 × 60 tiles, critical cut  
Dalles 60 × 60 cm, avec raccord

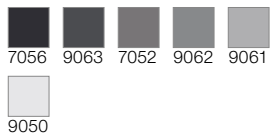




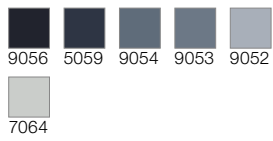
**F55-01A**



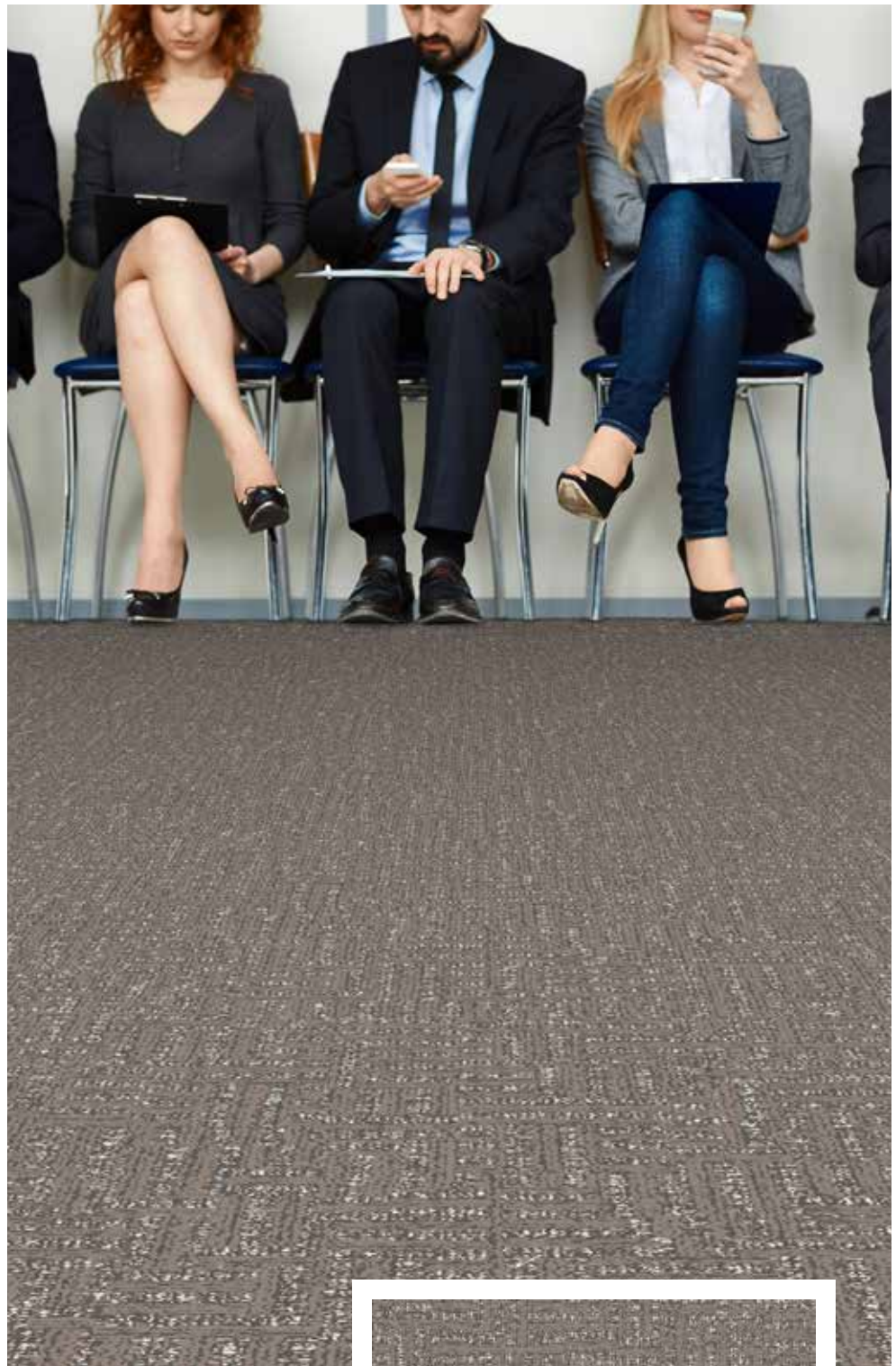
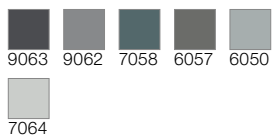
**F55-02A**



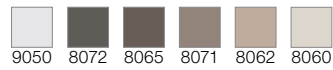
**F55-03A**



**F55-05A**



**F55-04A**

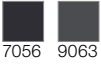


60er Fliesen, rapportgenau  
60 x 60 tiles, critical cut  
Dalles 60 x 60 cm, avec raccord





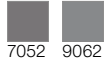
**F56-01A**



7056 9063



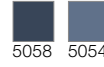
**F56-02A**



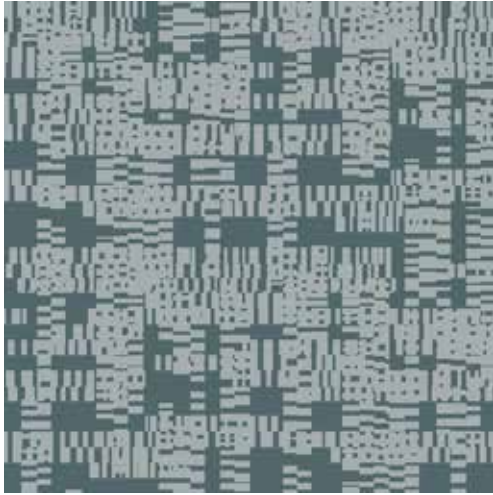
7052 9062



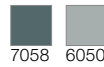
**F56-03A**



5058 5054



**F56-05A**



7058 6050

60er Fliesen, rapportgenau  
60 x 60 tiles, critical cut  
Dalles 60 x 60 cm, avec raccord

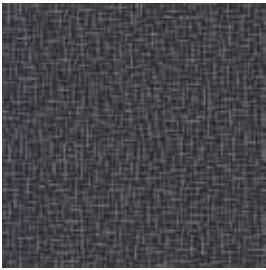


**F56-04A**

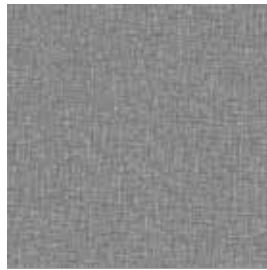


8072 8071

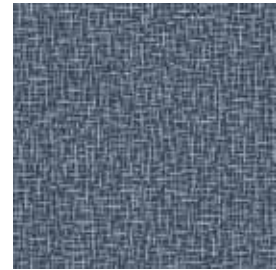




**F57-01A**



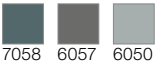
**F57-02A**



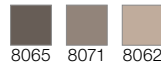
**F57-03A**



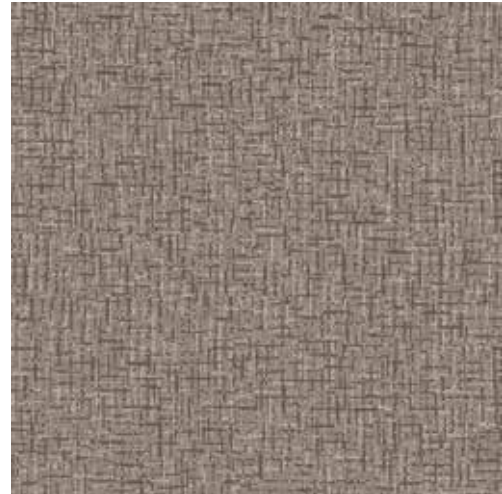
**F57-05A**



**F57-04A**

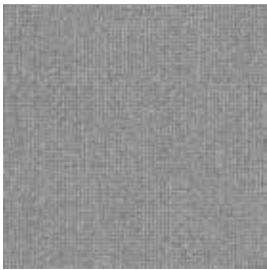


60er Fliesen, rapportgenau  
60 x 60 tiles, critical cut  
Dalles 60 x 60 cm, avec raccord





**F58-01A**



**F58-02A**



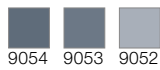
**F58-04A**



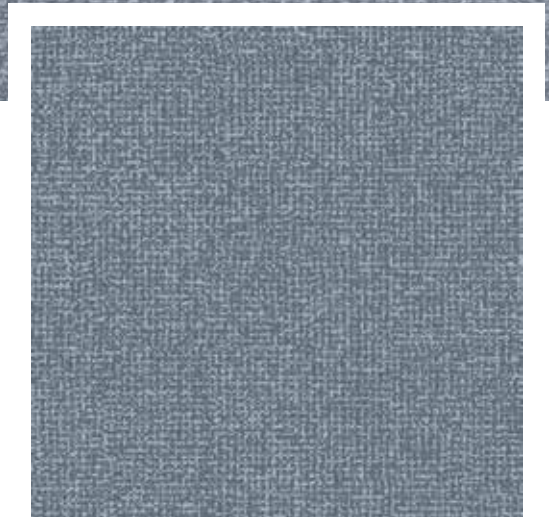
**F58-05A**

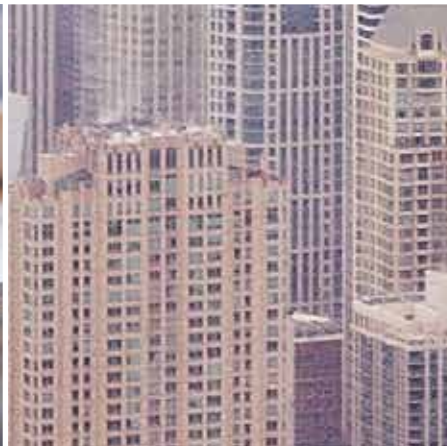
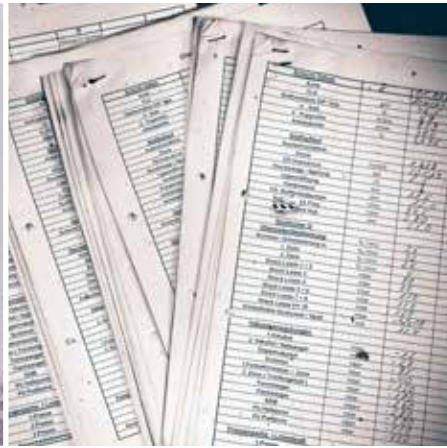
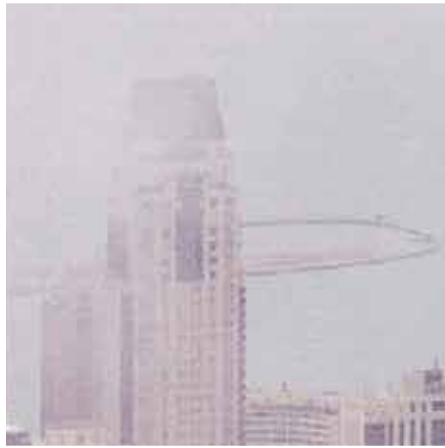


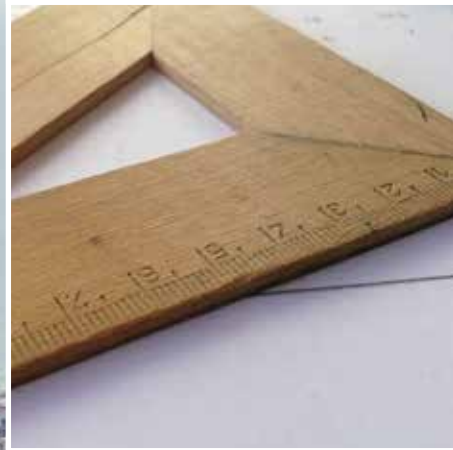
**F58-03A**



60er Fliesen, rapportgenau  
60 x 60 tiles, critical cut  
Dalles 60 x 60 cm, avec raccord

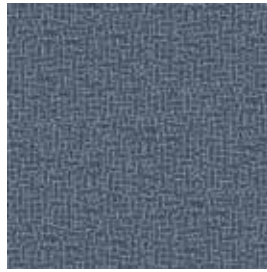








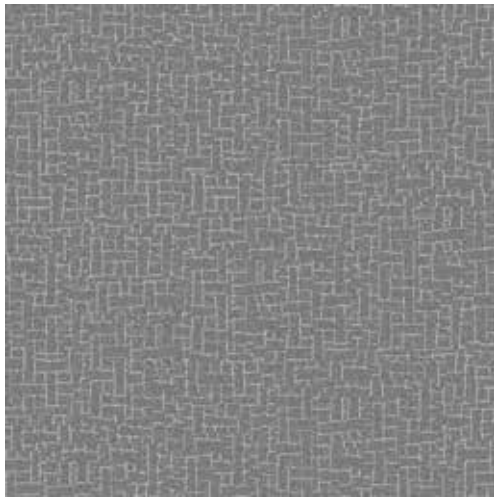
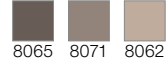
**F59-01A**



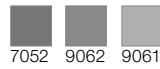
**F59-03A**



**F59-04A**



**F59-02A**



60er Fliesen, rapportgenau  
60 x 60 tiles, critical cut  
Dalles 60 x 60 cm, avec raccord



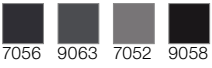
**F59-05A**



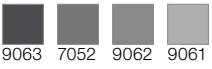




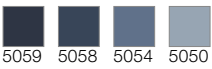
**F60-01A**



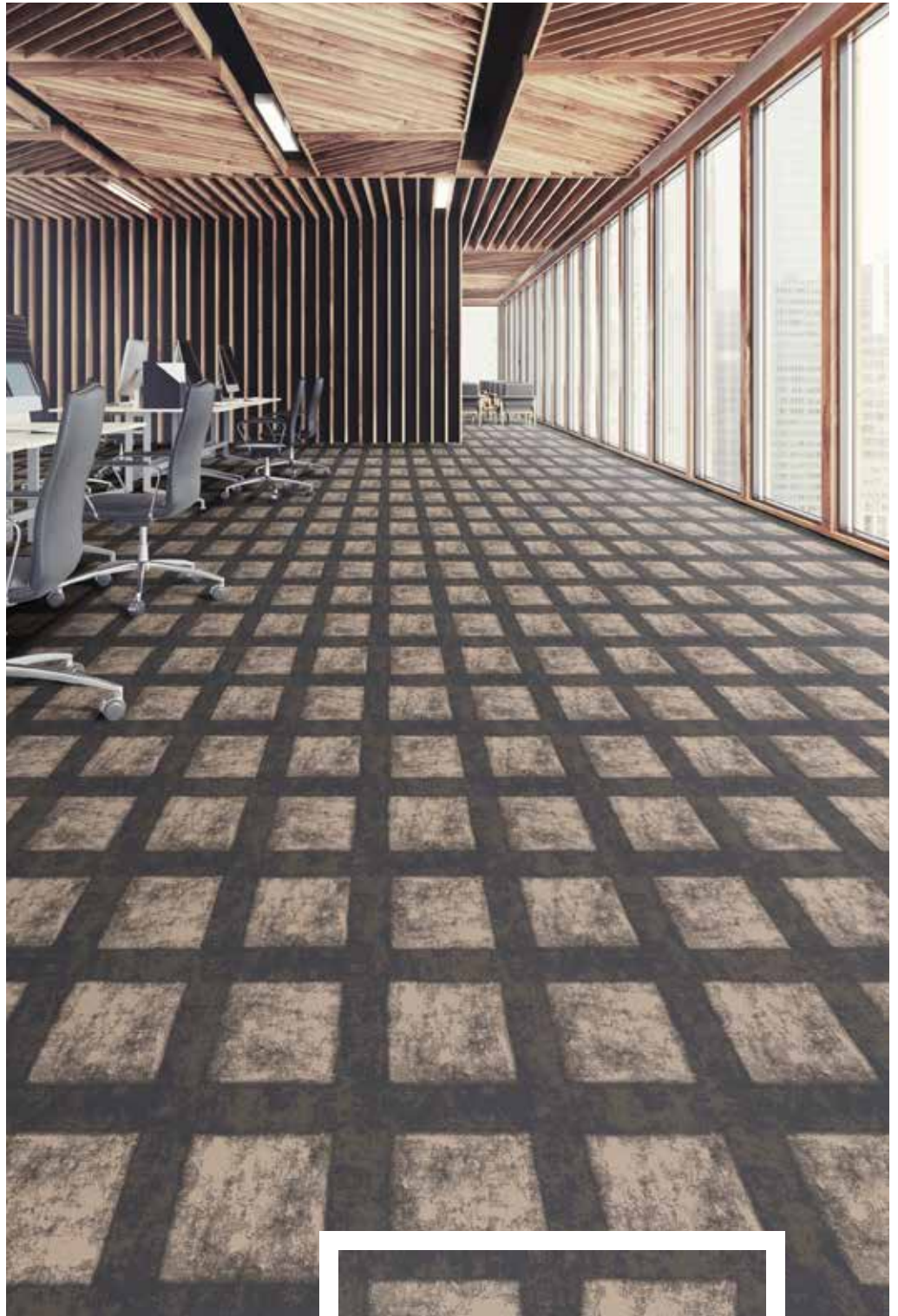
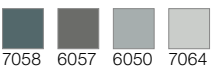
**F60-02A**



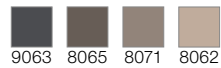
**F60-03A**



**F60-05A**

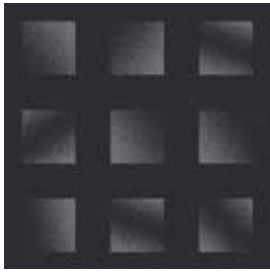


**F60-04A**

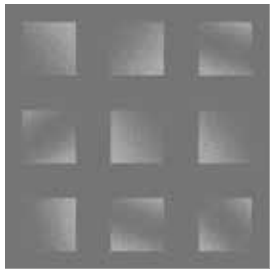


60er Fliesen, rapportgenau  
60 x 60 tiles, critical cut  
Dalles 60 x 60 cm, avec raccord





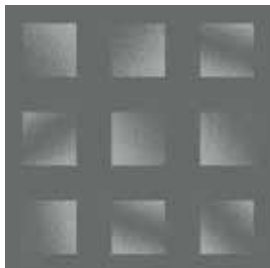
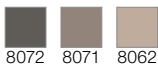
**F61-01A**



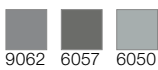
**F61-02A**



**F61-04A**



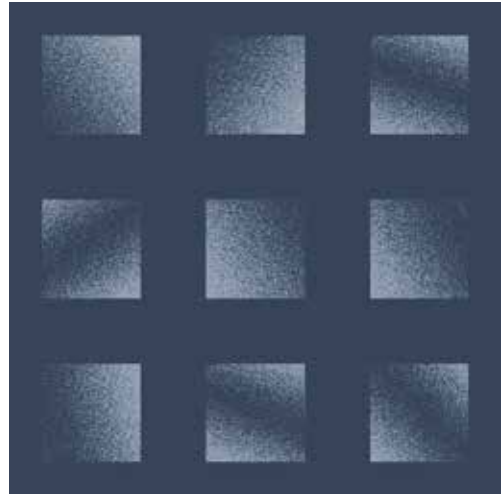
**F61-05A**



**F61-03A**



60er Fliesen, rapportgenau  
60 x 60 tiles, critical cut  
Dalles 60 x 60 cm, avec raccord

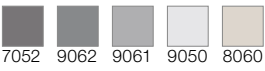




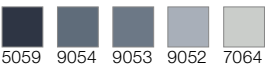
**F62-01A**



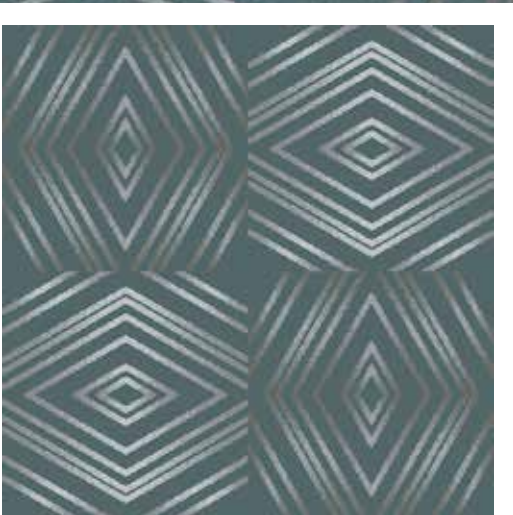
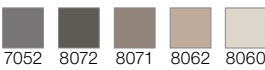
**F62-02A**



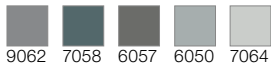
**F62-03A**



**F62-04A**



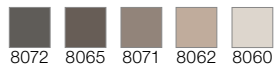
**F62-05A**



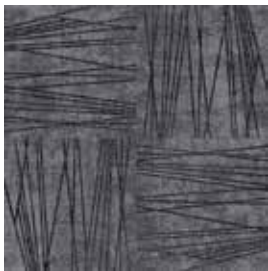
60er Fliesen, rapportgenau  
60 x 60 tiles, critical cut  
Dalles 60 x 60 cm, avec raccord



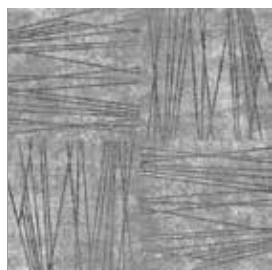
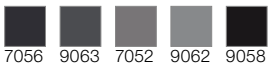
**F63-04A**



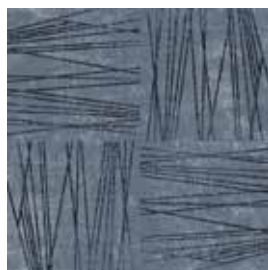
60er Fliesen, rapportgenau  
60 x 60 tiles, critical cut  
Dalles 60 x 60 cm, avec raccord



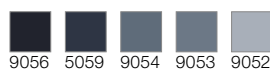
**F63-01A**



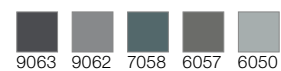
**F63-02A**

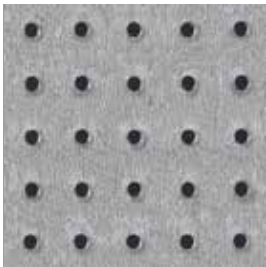


**F63-03A**



**F63-05A**

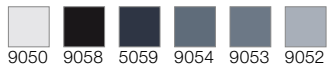




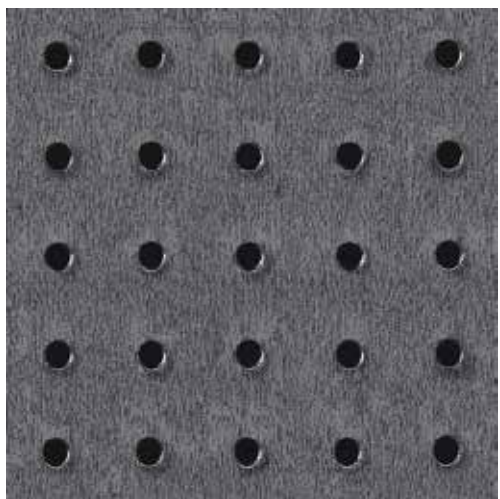
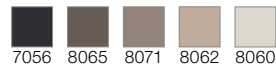
**F64-02A**



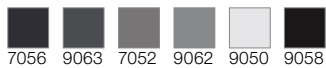
**F64-03A**



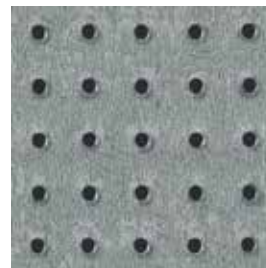
**F64-04A**



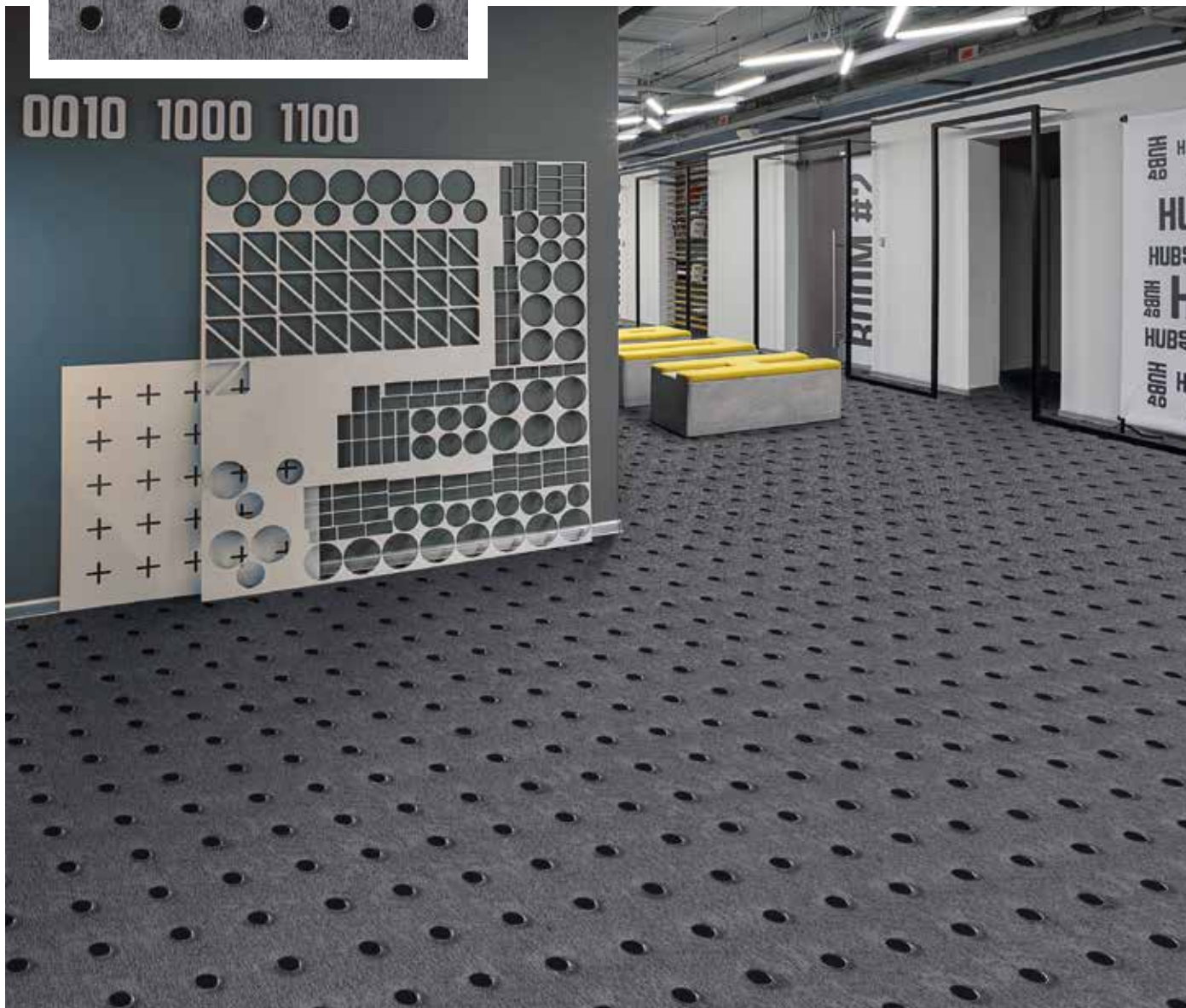
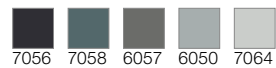
**F64-01A**



60er Fliesen, rapportgenau  
 60 × 60 tiles, critical cut  
 Dalles 60 × 60 cm, avec raccord

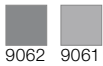


**F64-05A**





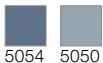
**F65-02A**



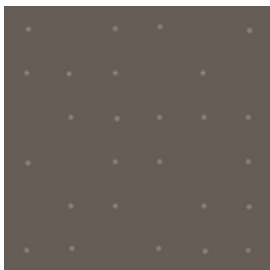
9062 9061



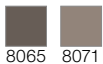
**F65-03A**



5054 5050



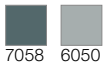
**F65-04A**



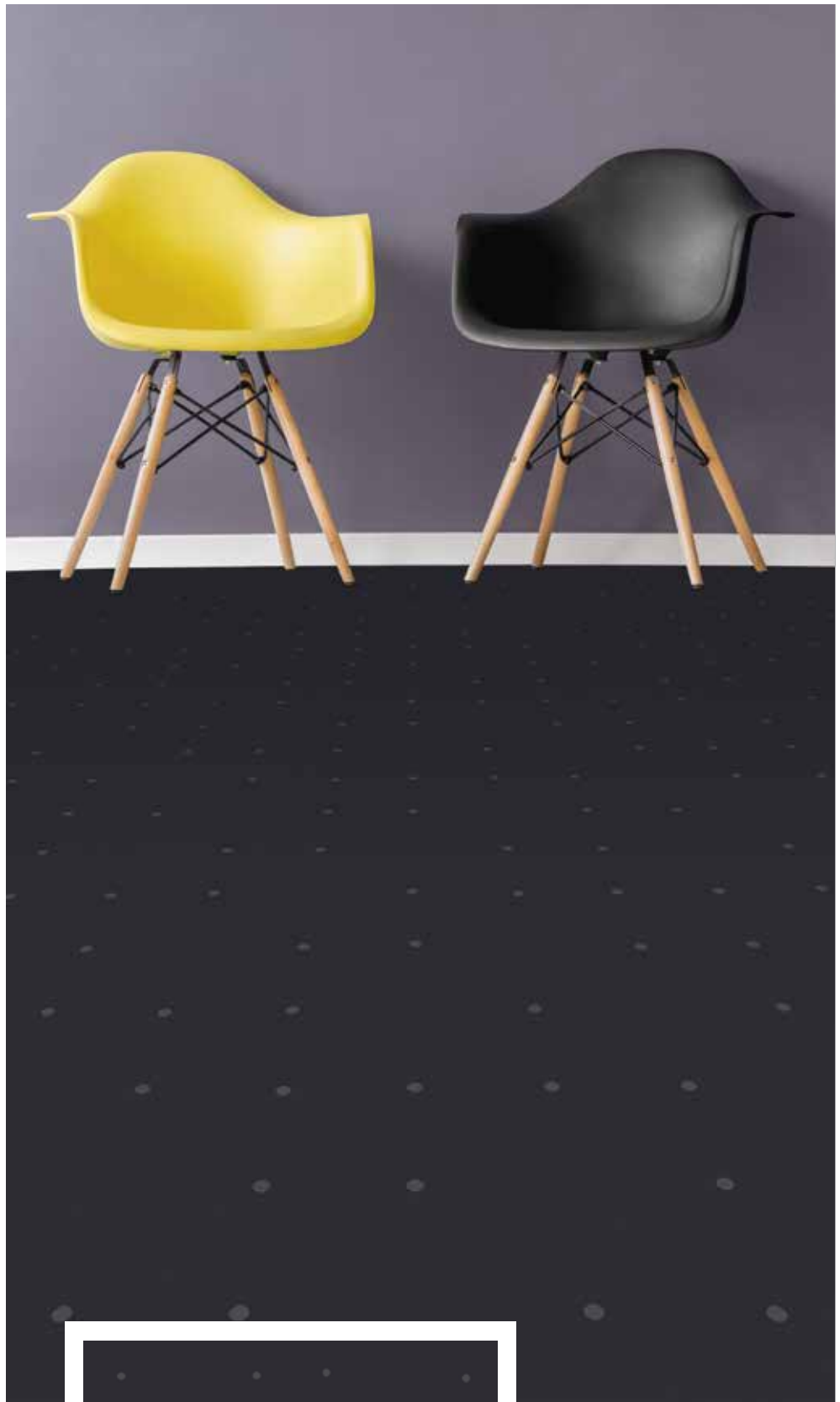
8065 8071



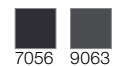
**F65-05A**



7058 6050

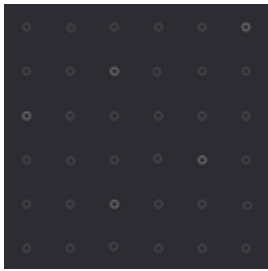


**F65-01A**



7056 9063

60er Fliesen, rapportgenau  
60 x 60 tiles, critical cut  
Dalles 60 x 60 cm, avec raccord



**F66-01A**



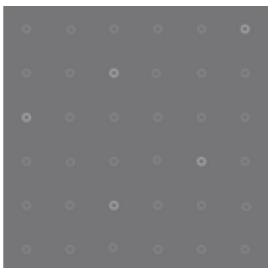
7056 9063 7052

**F66-03A**



5058 5054 5050

60er Fliesen, rapportgenau  
60 x 60 tiles, critical cut  
Dalles 60 x 60 cm, avec raccord



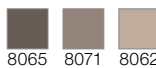
**F66-02A**



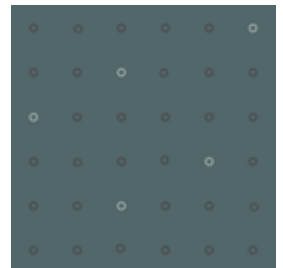
7052 9062 9061



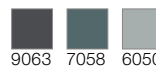
**F66-04A**



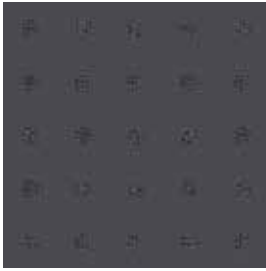
8065 8071 8062



**F66-05A**



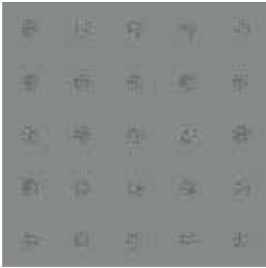
9063 7058 6050



**F67-01A**



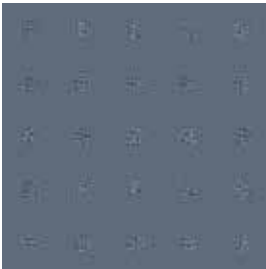
9063 7052 9058



**F67-02A**



9063 9062 9061



**F67-03A**



5069 9054 9052

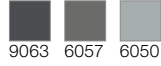


**F67-04A**



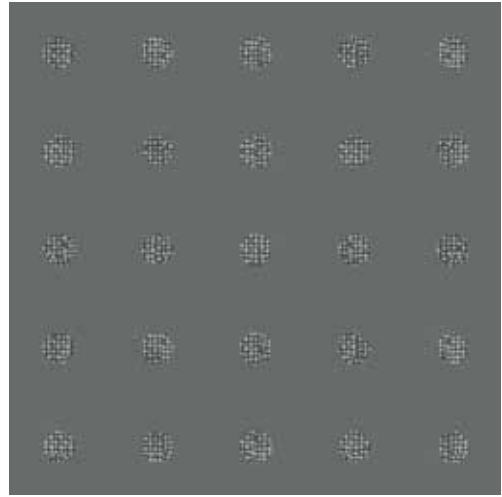
8072 8071 8062

**F67-05A**

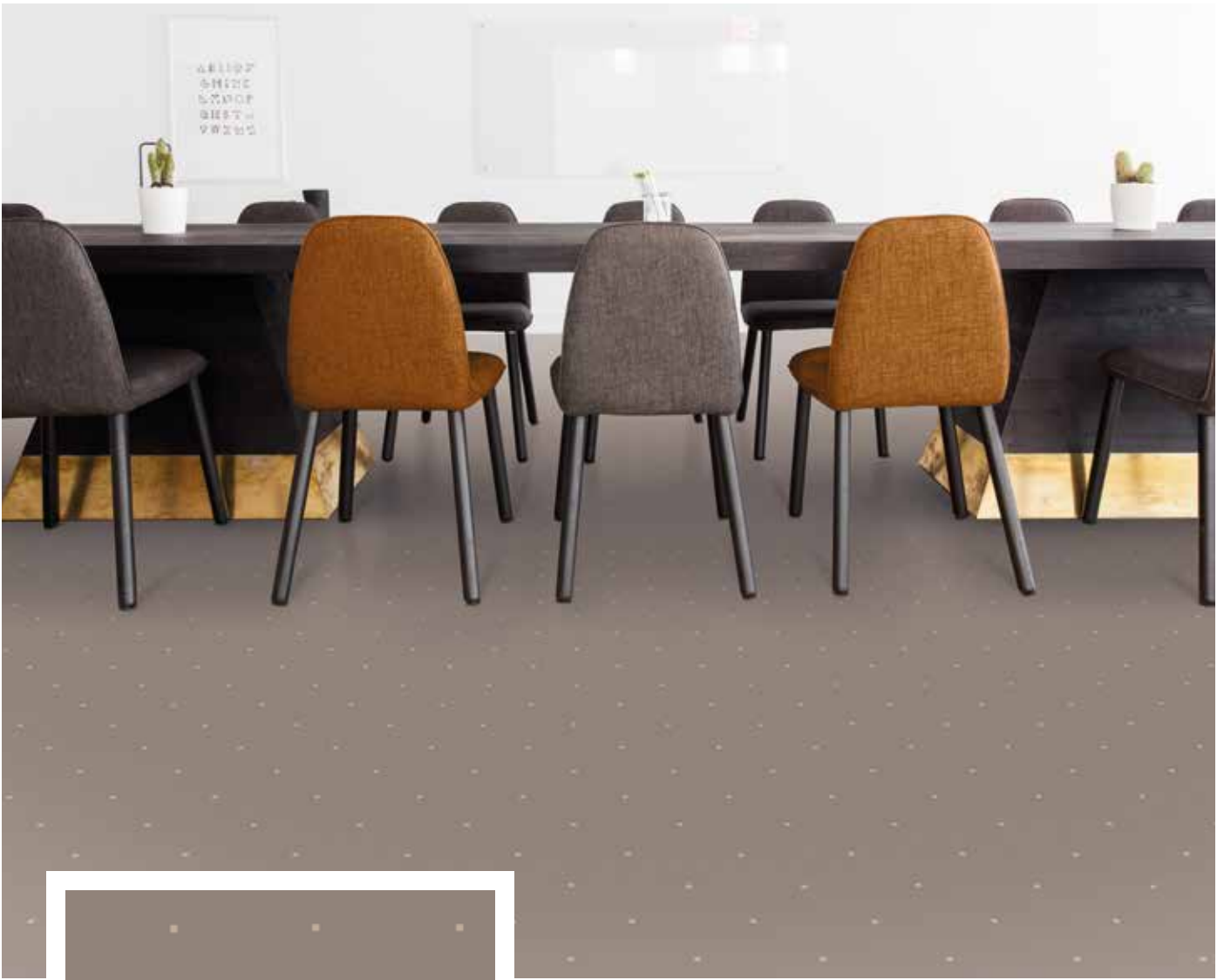


9063 6057 6050

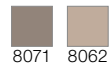
60er Fliesen, rapportgenau  
60 x 60 tiles, critical cut  
Dalles 60 x 60 cm, avec raccord



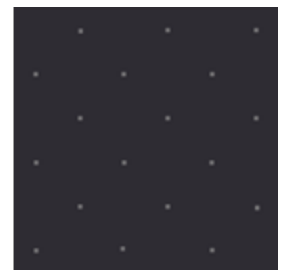




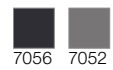
**F68-04A**



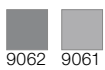
60er Fliesen, rapportgenau  
 60 x 60 tiles, critical cut  
 Dalles 60 x 60 cm, avec raccord



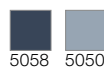
**F68-01A**



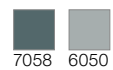
**F68-02A**



**F68-03A**

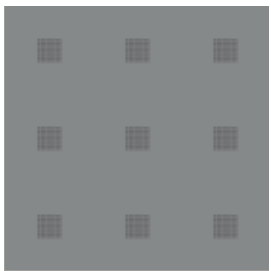
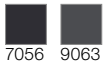


**F68-05A**

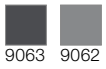




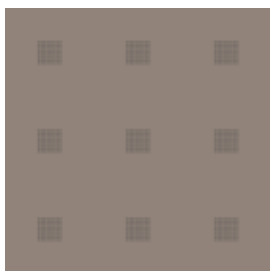
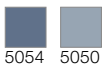
**F69-01A**



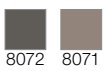
**F69-02A**



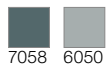
**F69-03A**



**F69-04A**



**F69-05A**



60er Fliesen, rapportgenau  
60 x 60 tiles, critical cut  
Dalles 60 x 60 cm, avec raccord





**F70-01A**



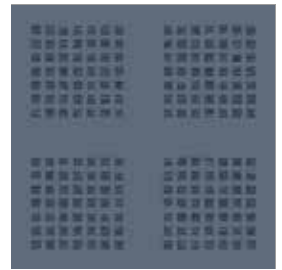
7056 9063 7052



**F70-02A**



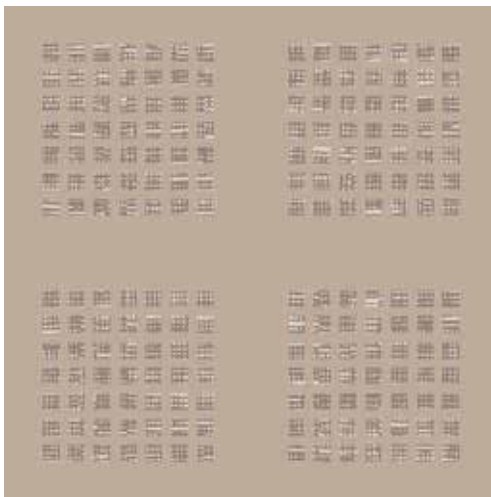
7052 9062 9061



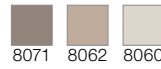
**F70-03A**



5059 9054 5054

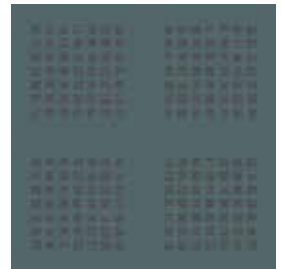


**F70-04A**

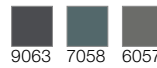


8071 8062 8060

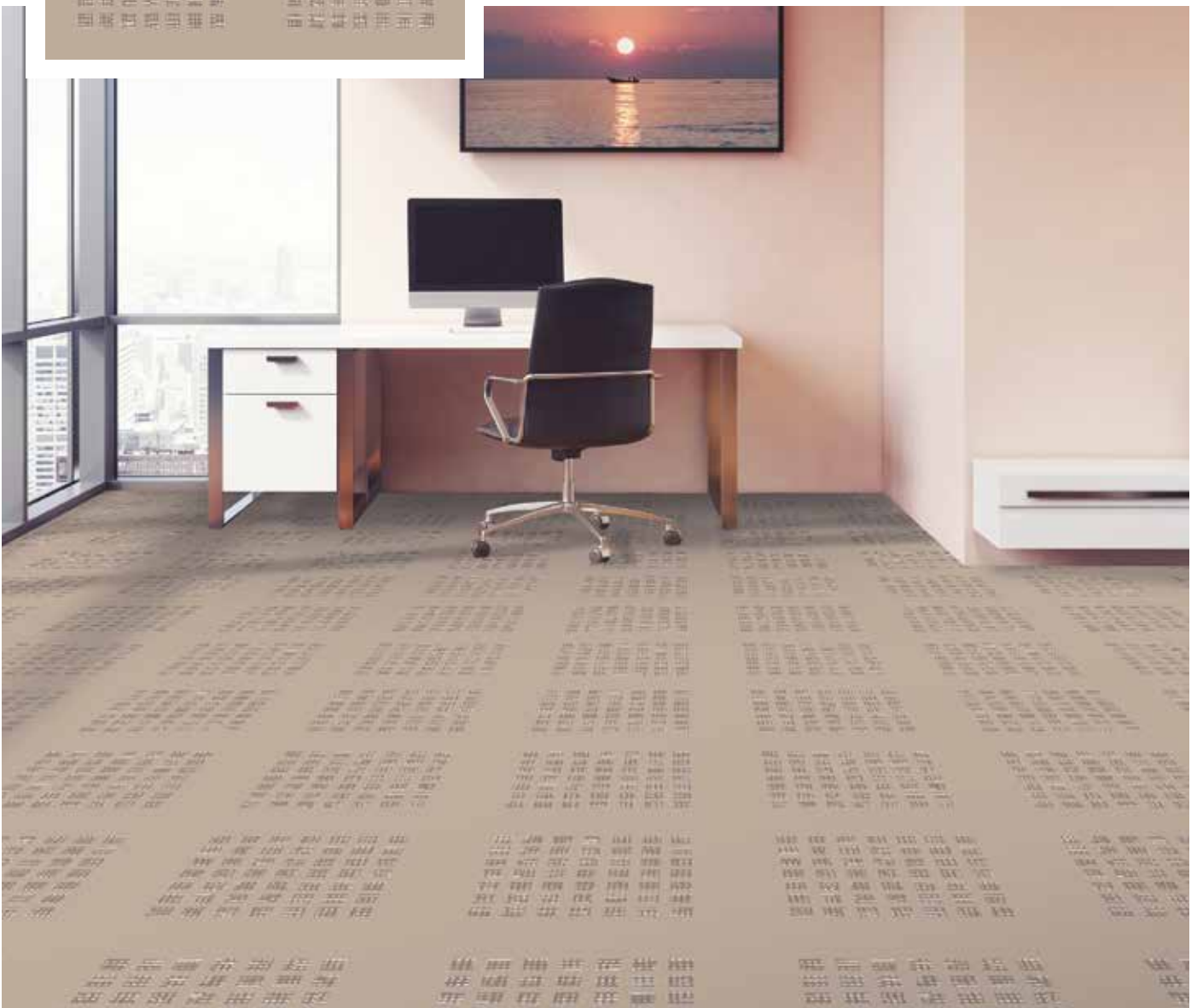
60er Fliesen, rapportgenau  
60 x 60 tiles, critical cut  
Dalles 60 x 60 cm, avec raccord



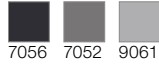
**F70-05A**



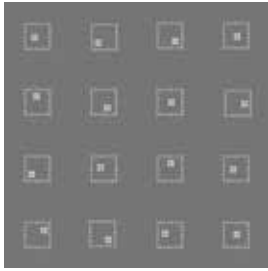
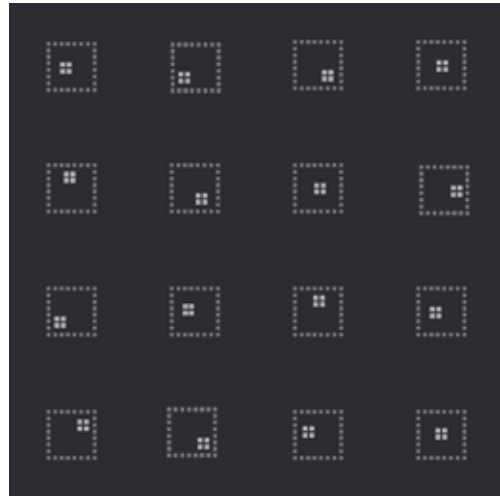
9063 7058 6057



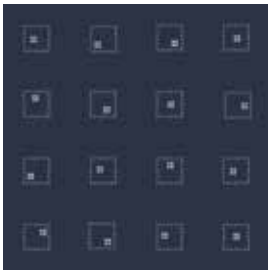
**F71-01A**



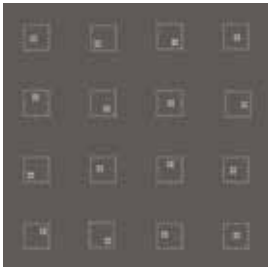
60er Fliesen, rapportgenau  
60 x 60 tiles, critical cut  
Dalles 60 x 60 cm, avec raccord



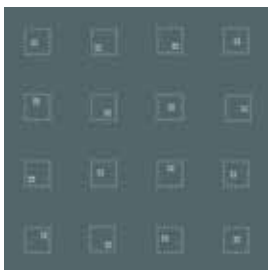
**F71-02A**



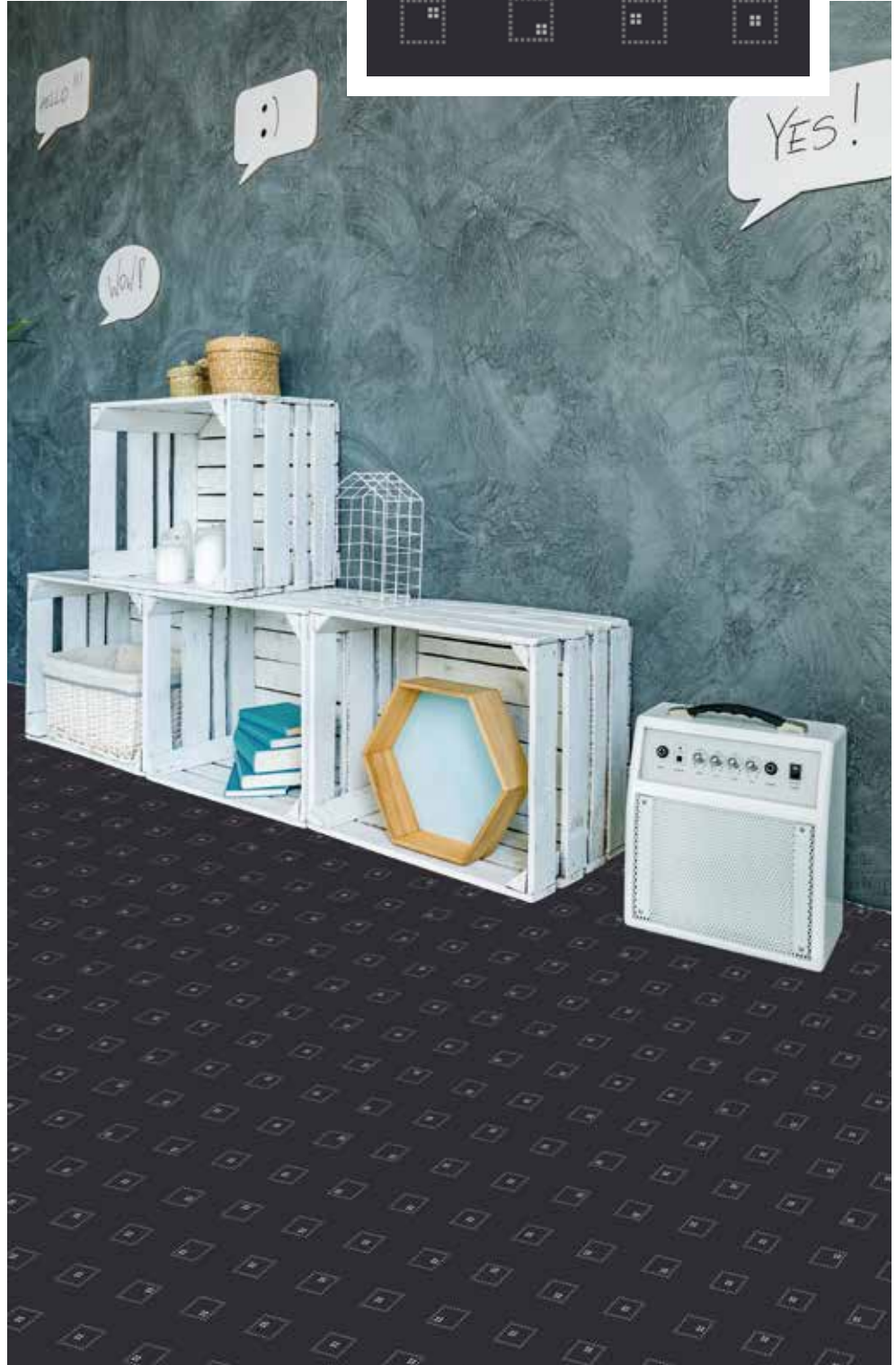
**F71-03A**



**F71-04A**

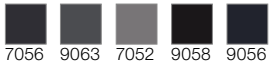


**F71-05A**

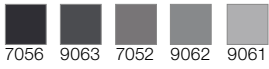




**F72-01A**



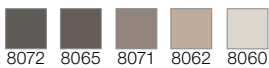
**F72-02A**



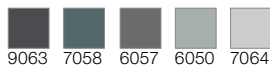
**F72-03A**



**F72-04A**



**F72-05A**

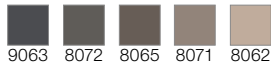


60er Fliesen, rapportgenau  
60 x 60 tiles, critical cut  
Dalles 60 x 60 cm, avec raccord





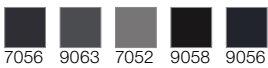
**F73-04A**



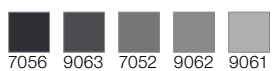
60er Fliesen, rapportgenau  
60 x 60 tiles, critical cut  
Dalles 60 x 60 cm, avec raccord



**F73-01A**



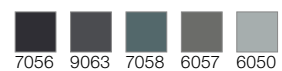
**F73-02A**

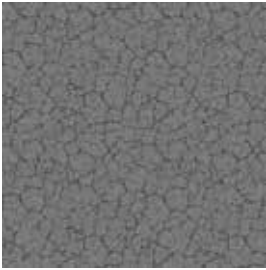


**F73-03A**

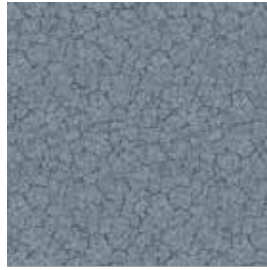
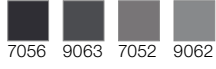


**F73-05A**

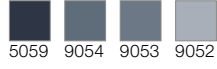




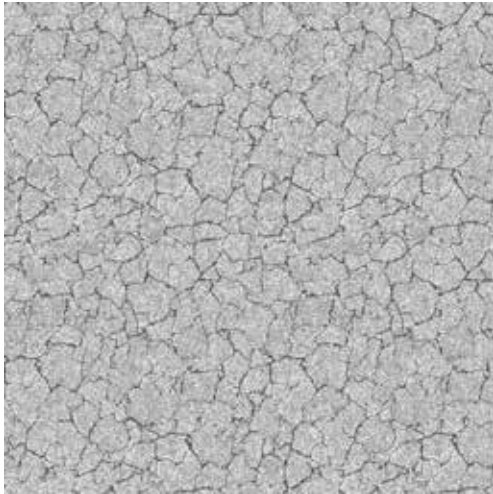
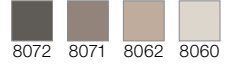
**F74-01A**



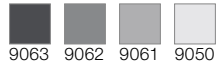
**F74-03A**



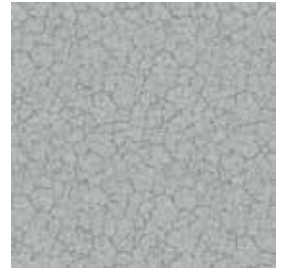
**F74-04A**



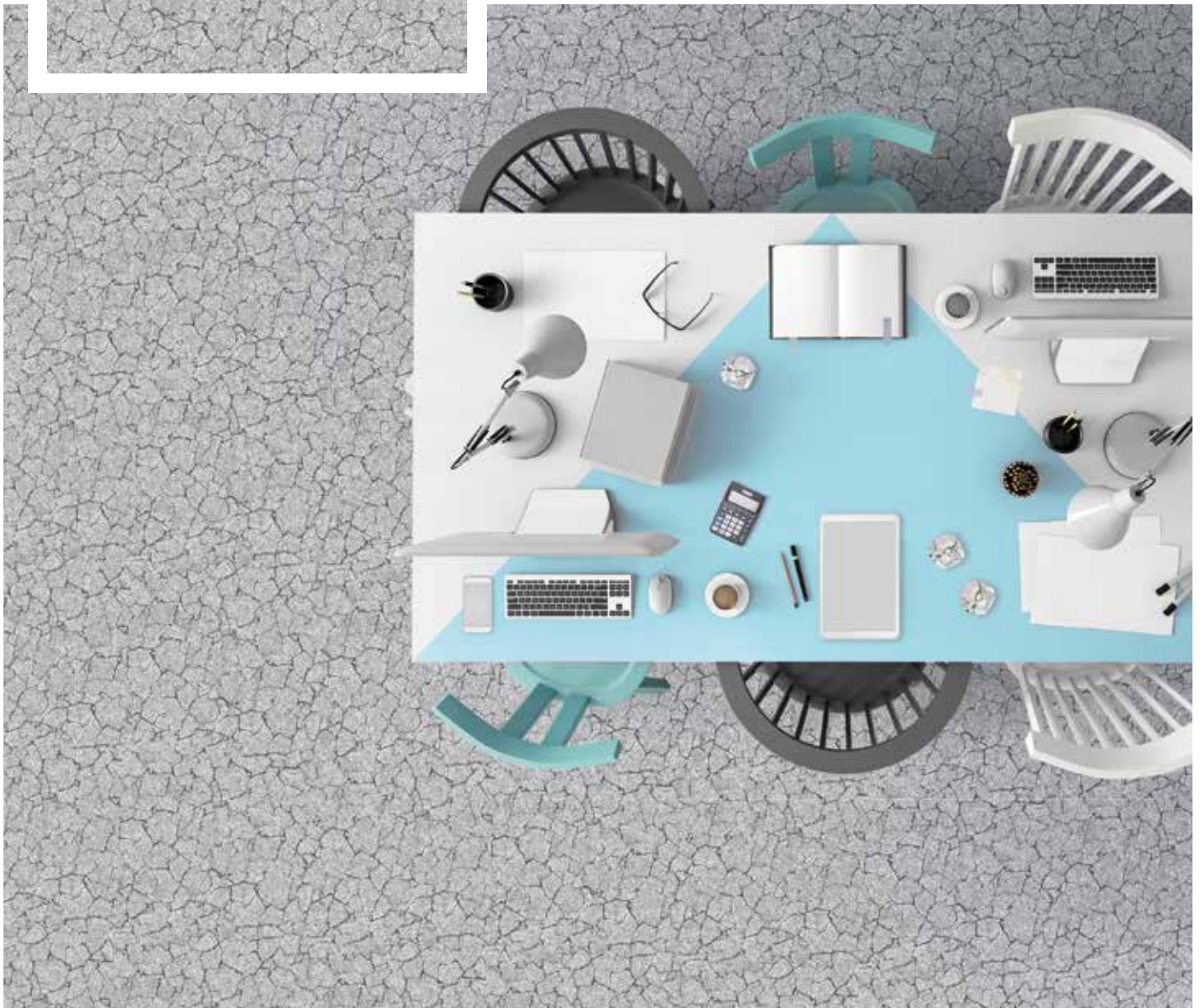
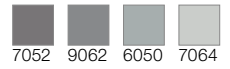
**F74-02A**



60er Fliesen, rapportgenau  
60 x 60 tiles, critical cut  
Dalles 60 x 60 cm, avec raccord



**F74-05A**





**F75-01A**



9058 9056 5059



**F75-03A**



5059 5058 5054



**F75-04A**



8065 8071 8062



**F75-05A**



9062 9061 7064

**F75-02A**



9063 7052 9062

60er Fliesen, rapportgenau  
60 x 60 tiles, critical cut  
Dalles 60 x 60 cm, avec raccord







**F76-01A**



**F76-02A**



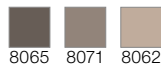
**F76-03A**



**F76-05A**



**F76-04A**



60er Fliesen, rapportgenau  
60 x 60 tiles, critical cut  
Dalles 60 x 60 cm, avec raccord



# FLIESENGRÖSSEN | TILE SIZES | TAILLES DE CARREAUX

Bestellnummer der Fliesengrößen

Order numbers of tile sizes

Numéros de commande des tailles de carreaux

60 × 60 cm:

**F63-04A**

120 × 120 cm:

**F63-01B**

180 × 180 cm:

**F63-05C**



# FARBEN | COLOURS | COULEURS



KF 7056



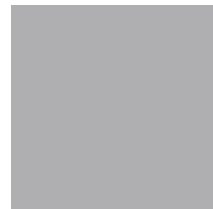
KF 9063



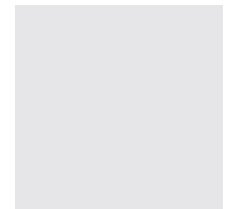
KF 7052



KF 9062



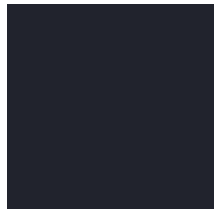
KF 9061



KF 9050



KF 9058



KF 9056



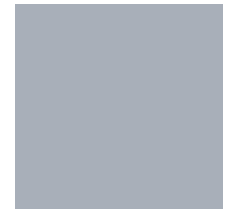
KF 5059



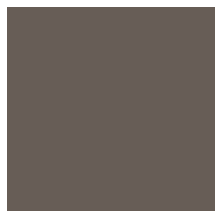
KF 9054



KF 9053



KF 9052



KF 8065



KF 8072



KF 6057



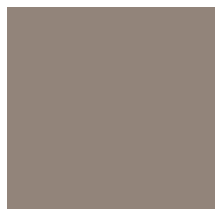
KF 7058



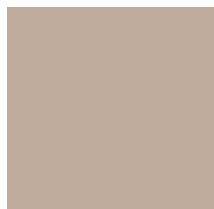
KF 6050



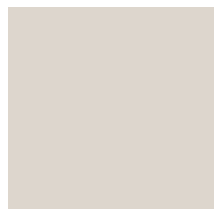
KF 7064



KF 8071



KF 8062



KF 8060



KF 5058



KF 5054



KF 5050

Bitte beachten Sie, dass die in dieser Kollektion dargestellten Farben nur annähernd den tatsächlichen Teppichbodenfarben entsprechen. Verwenden Sie bitte unsere original Farbmuster.

Please note that colours in this printed brochure are approximate. For correct colours please refer to our colour samples.

Veillez noter que les couleurs représentées dans cette collection sont approximatives par rapport aux couleurs réelles. S'il vous plaît utiliser notre nuancier original.

Achtung: aus technischen Gründen ist ein Verspringen des Dessins von Fliese zu Fliese um ca. +/- 5mm nicht auszuschließen. Dies wird als Reklamationsgrund nicht anerkannt und ist ggf. vom Verleger auszugleichen.

Attention: For technical reasons we cannot completely exclude that the design skips from tile to tile by approx +/- 5 mm. This is not accepted as a reason for a claim and possibly has to be cleared by the layer.

Attention: Pour des raisons techniques un pose en quinconce de dessin de dalle à dalle doit être toléré autour de +/- 5 mm. Ca ne représente pas un motif de réclamation et doit être corrigé éventuellement par le poseur.

## ARCADE SPEZIAL EASY LIFT 2,5 / DC 800 EASY LIFT 2,5

Warenkonstruktion Construction   Structure		Tufting Glattvelour 1/10" tufted cut pile non heatset 1/10"   Tufting Velours ras 1/10"
Mustergestaltung Design   Dessin		Chromojet Druck Chromojet printed   Impression jet d'encre
Polmaterial nach TKG Pile layer   Nature de la fibre selon la TKG		100 % Polyamid 6 100 % Polyamide 6   100 % Polyamide 6
Tufting-Träger Primary backing   Sous-couche tuftage		75 % PES / 25 % PA-Vlies 75 % PES / 25 % PA-non woven   75 % polyester / 25 % non-tissé PA
Rückenausrüstung Secondary backing   Dossier d'envers		Easy Lift 2,5 PES - Abdeckvlies Easy Lift 2,5 PES non woven   Easy Lift 2,5 PES non-tissé
Lieferform Available size Format de livraison	Fliesen tiles and modules carreaux	Größe nach Anforderung size on demand dimension sur demande
Verwendungsbereich Wear rating   Domaine d'application	EN 1307	gewerblich - stark (33) commercial - heavy (33)   commercial - élevé (33)
Komfortwert Comfort rating   Valeur de confort	EN 1307	LC 2
Flächengewicht Total weight   Grammage total	ISO 8543	ca. 2764 g/m <sup>2</sup> app. 2764 g/m <sup>2</sup>
Gesamtdicke Total thickness   Épaisseur totale	ISO 1765	ca. 6,5 mm app. 6,5 mm
Poleinsatzgewicht Pile total yarn weight   Poids du velours		ca. 770 g/m <sup>2</sup> app. 770 g/m <sup>2</sup>
Polschichtdicke Pile height above primary backing Épaisseur du velours	ISO 1766	ca. 4,1 mm app. 4,1 mm
Pol-Rohdichte Pile density   Densité brute du velours	ISO 8543	ca. 0,12 g/cm <sup>3</sup> app. 0,12 g/cm <sup>3</sup>
Noppenzahl Number of tufts   Nombre de tufts	ISO 1763	ca. 316000 /m <sup>2</sup> app. 316000 /m <sup>2</sup>
Elektrostatistisches Verhalten Vertical resistance Comportement électrostatique	ISO 6356	≤ 2 kV
Bewertete Trittschallminderung Impact sound reduction Indice de réduction des bruits d'impact	ISO 140-8	ca. 29 dB app. 29 dB
Schallabsorptionsgrad $\alpha_w$ Sound absorption rate Coéfficient d'absorption acoustique	ISO 354	ca. 0,15 app. 0,15
Wärmedurchlaßwiderstand Thermal resistance   Résistivité thermique	ISO 8302	ca. 0,12 m <sup>2</sup> K/W app. 0,12 m <sup>2</sup> K/W
Prodis-Lizenz-Nummer Prodis-licence-number   N° de licence Prodis		7CF81CC0
Brandverhalten Reaction to fire   Comportement au feu	EN 13501	Cfl-s1
CE-Nummer CE-number   numero CE		1658-CPR-3163
DoP-Nummer DoP-number   numero DoP		0004
Lichtechtheit Colour fastness to light   Stabilité à la lumière	DIN EN ISO 105 B02	≥ 5
Wasserechtheit Colour fastness to water   Résistance à l'eau	DIN EN ISO 105 E01	≥ 4
Reibechtheit Colour fastness to rubbing Résistance à l'usure par friction	DIN EN ISO 105 X12	≥ 3-4



# CARPET TILE GUIDE



Halbmond Teppichwerke GmbH  
Brückenstraße 1  
D-08606 Oelsnitz, Germany  
Tel.: +49 37421-42-0  
Fax: +49 37421-42-571  
info@halbmond.de  
www.halbmond.de



HTW DESIGN CARPET  
Mindener Str. 6  
D-32049 Herford, Germany  
Tel.: +49 5221-1779-0  
Fax: +49 5221-1779-79  
info@htw-designcarpet.de  
www.htw-designcarpet.de

